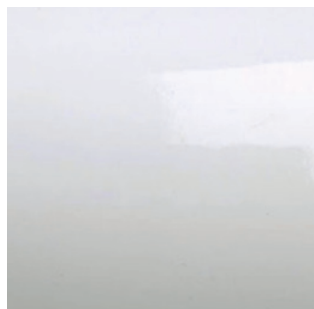


FINITURE METALLI  
METALS FINISHING  
FINITIONS MÉTAUX  
METALLE BESCHICHTUNGEN  
ACABADOS METALES



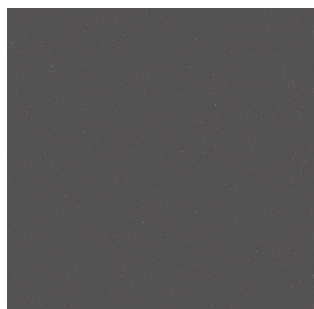
Bianco lucido - *Gloss white*



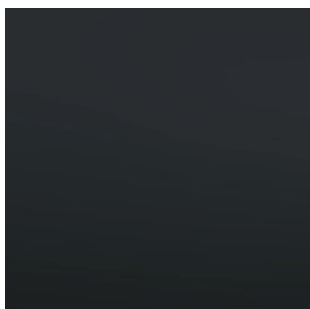
Sabbia - *Sand*



Argilla - *Clay*



Ardesia - *Slate*



Nero opaco - *Matt black*



**pietranera**<sup>®</sup>  
ITALIAN DESIGN & PRODUCTION