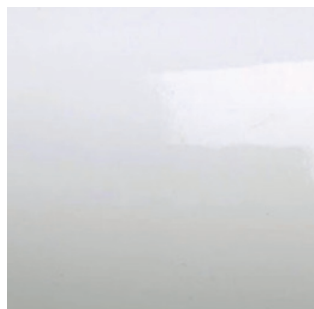


FINITURE METALLI
METALS FINISHING
FINITIONS MÉTAUX
METALLE BESCHICHTUNGEN
ACABADOS METALES



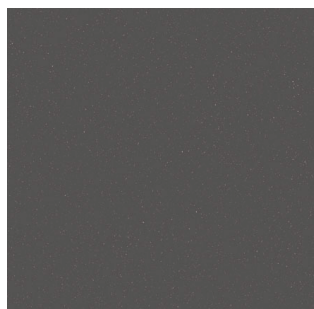
Bianco lucido - *Gloss white*



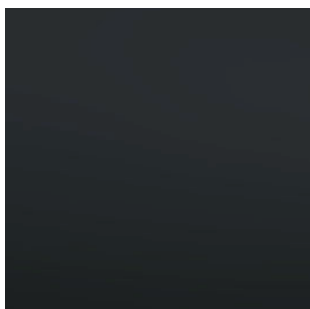
Sabbia - *Sand*



Argilla - *Clay*



Ardesia - *Slate*



Nero opaco - *Matt black*



Oro - *Gold*



pietranera[®]
ITALIAN DESIGN & PRODUCTION